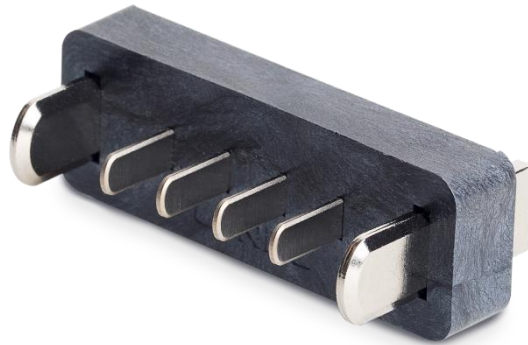


D90575 (MC35-180-30)

Battery Mating Connector

P/N: 211947



Picture only for reference

Features:

- Mating connector for standard battery form factors D935xx
- 30.00A max. charge or discharge current to battery
- 6-pin male connector
 - 4 signal pins: 5mm pitch
 - 2 power pins: 7mm pitch
- RoHS and REACH compliant

Applications:

Mating connector for our smart batteries used in medical, industrial and consumer applications

Specification

Ratings	
Current	30.00A max. / power pin 1.00A max. / signal pin
Voltage	60.00V (power) 6.00V (signal)
Materials	
Housing	Thermoplastic High Temperature, UL 94 V-0 (LCP), black
Contacts	Copper Alloy
Plating	120µin Nickel overall, 50µin Nickel on contact area
Environmental Condition	
Operating Temperature	-40°C to +85°C
Electrical Requirements	
Contact Resistance	50mOhm max.
Insulation Resistance	1000MOhm min. at 500VDC / 1min
Dielectric withstand	500.00V / 1min
Mechanical Requirements	
Dimensions (LxWxH)	35mm x 12mm x 18.50mm
Weight	7g
PCB mounting	180°
Contact Retention Force	1500g min. / power pin 1000g min. / signal pin
Durability	5000 cycles
Physical Requirements	
Solder Temperature	260°C ± 5°C
Immersion Period	5sec
Regulatory Approvals	
Green Procurement	RoHS REACH
Packaging	
17 connectors per tube	
48 tubes per carton	

Drawings

